

The Water Oasis



Purpose of the project:

In all historic times, the administrations of cities, have taken care to promote and install public water sources (fountains, drinking fountains, exhibitions), thus satisfying the citizenship basic need and at the same time characterizing many european cities

The tap water is a precious public source,
is : inexhaustible, drinking, controlled and secure.



The Oasis Water "is designed to make the most natural water resources and make them accessible to all.

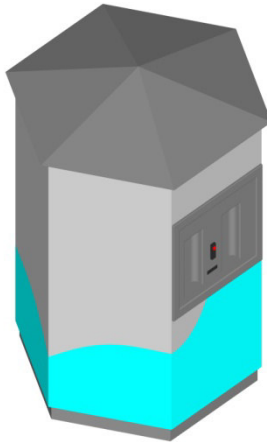
Creating some of distribution points with the " Oasis Water " , the citizens can avail of a public service in addition, they will have benefits on their savings and will create a further important link with their common.



Features and main dimensions of the innovation:

WATER SUPPLY POINT

Renderizzo ISO 01



Progettista: Giulio Tomassini

The project is a dispenser of purified water chilled with or without addition of carbon dioxide.

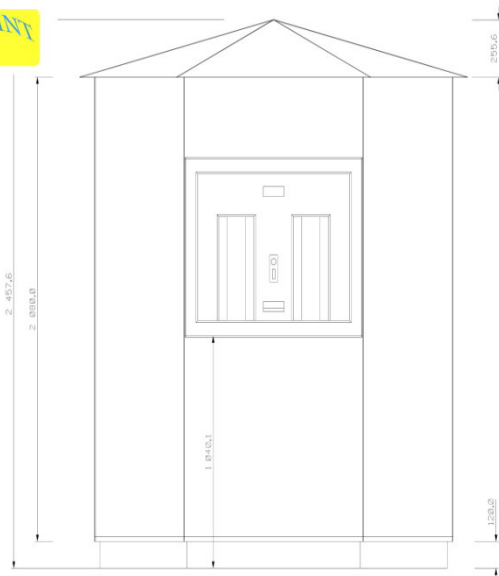
The whole project will be realized with elements of industrial production so completely made in factory.

The assembly of the constituent elements will be carried out in the workshop.

This system in addition to reducing the production costs, will favor the speed of implementation, because once transported from the workshop to the point of installation and performed the electric and water connections, the system is fully functional.

WATER SUPPLY POINT

Prospetto Frontale

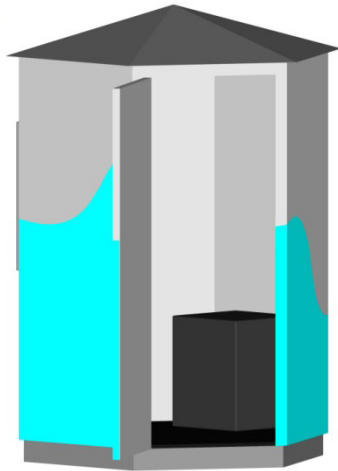


Particolare Sportello
Erogatore
Progettista: Giulio Tomassini

Details of the project:

WATER SUPPLY POINT

Renderizzo 05



Particolare Interno Frigo
Progettista: Giulio Tomassini

• Inside the "Water Oasis" will be prepared to provide and dispense:

- Water at room temperature
- Chilled water
- Chilled carbonated water

• Inside the building there will be a technical room containing all the necessary machinery for the purification, cooling and carbonating water.

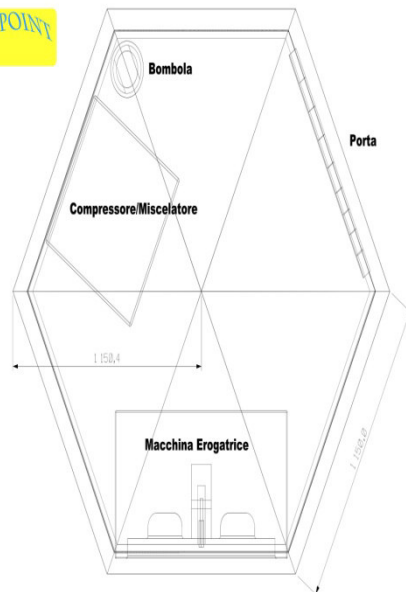
• Located upstream of the system will be present, a pressure reducer, a liter counter and a non-return valve of the water.

REQUIREMENTS FOR INSTALLATION:

- Potable Mains water
- Connection to the sewerage system (the water not used)
- Connection to the mains 230V - 50Hz (with system grounding)

WATER SUPPLY POINT

Pianta



Particolare Accessori
Progettista: Giulio Tomassini

The project "Water Oasis" means an end to all problems caused by water in the bottle:



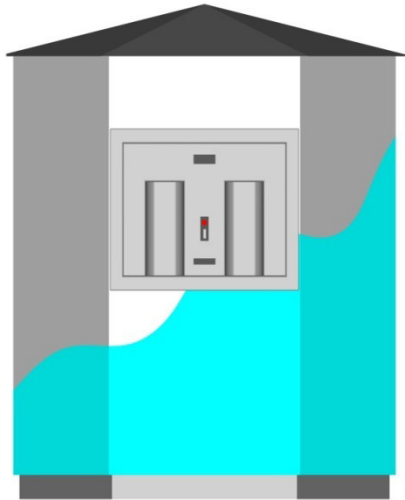
- High costs for the purchase of mineral bottled water
- Supply from citizen part for the mineral water necessarily during the opening hours
- Destination of a space for the storage of bottles
- Disposal of plastic bottles

Doubts over the rules for the transport and storage of bottled water

The realization of "Water Oasis" is born from a spirit that today, binds and unites many people that have respect environment

WATER SUPPLY POINT

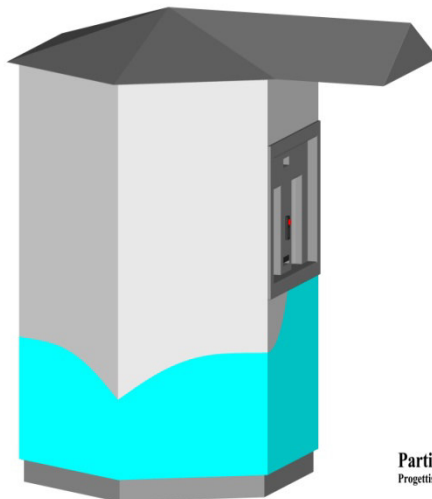
Renderizzo Frontale



Progettista: Giulio Tomassini

WATER SUPPLY POINT

Renderizzo 06



Particolare con Pensilina
Progettista: Giulio Tomassini

- The public water is safe and controlled (subject to constant checks) and quality requirements more stringent than bottled water.
- "The Water Oasis" is accessible to all (H24)
- Procurement is simple:
 - Via a button you can:
 - choose and supply
 - your Preferred water.
 - Payment can be made
 - by money or key Rechargeable Electronic in site.
- The water dispensed is extremely cheaps.
- The supplying, can take place using personal reusable containers, which do not require disposal.

The savings of the citizen

Supplies from the "Oasis water "lightens, consistently spending
Weekly the cost of the mineral water in bottle :

Comparing the purchase of bottled water and the water dispensed at the Municipal water house "Oasis Water":

- 0.82 (on average) Euro = selling price of a common mineral water bottled 1.5l
- 0.05 (on average) Euro = average selling price of 1.5 liter, water dispensed at the water house municipal "water oasis"
- 3lt (on average) = 2 bottles 1.5l = amount of water required for individual consumption daily
- ✓ **598.60 Euro = annual expenditure for a bottled water of a brand common**
- ✓ **36,50 Euro = annual expenditure water dispensed at the municipal water house "water oasis" for a person**
- ✓ **No. 730 PET bottles saved per year per individual**



The monthly expenditure per individual, for the consumption of mineral water, supplied in the " Oasis Water "would be equal to the price of buying just 3litri of bottled mineral water brand common.

The size of Service, as well as the savings offered, can be monitored and controlled

- **The company in using the best technological capacity**
- **of the sistem meets the strategic objectives of the business:**
- For payments of dispensing the water at the "Oasis Water "you can set:
- **Free Mode**
- **Payment mode**



For the paid mode you can set the price for each type of water supplied

Calculation of revenue for the company contractor (Oasis Water)

In Italy the average cost of a cubic meter of water is equivalent to € 1.19 (€ 0.00119 per liter).

Presetting a liter of water at € 0.5 per liter and the gain is considerable:
Es.

$0,00119 \times 1000 = € 1.19$ (price of a cubic meter of water) $0,05 \times 1000 = € 50$
(actual gain)

